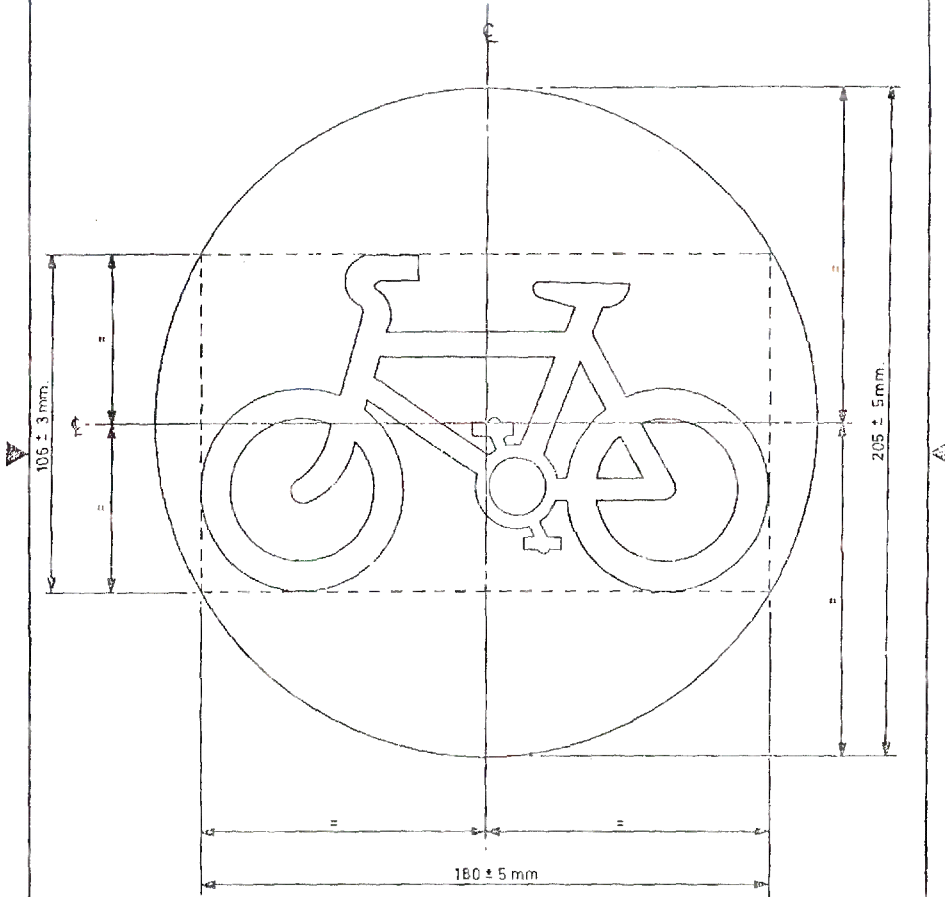


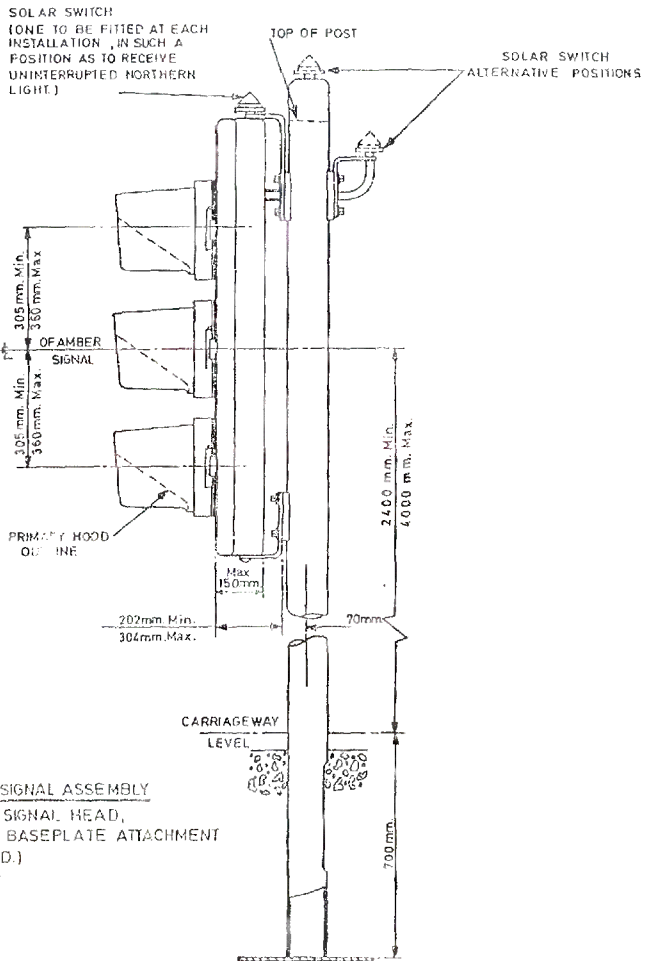
CYCLE SYMBOL

Symbol is to be in accordance
with Departmental drawing
WBM 225/1.



© CROWN COPYRIGHT 1985

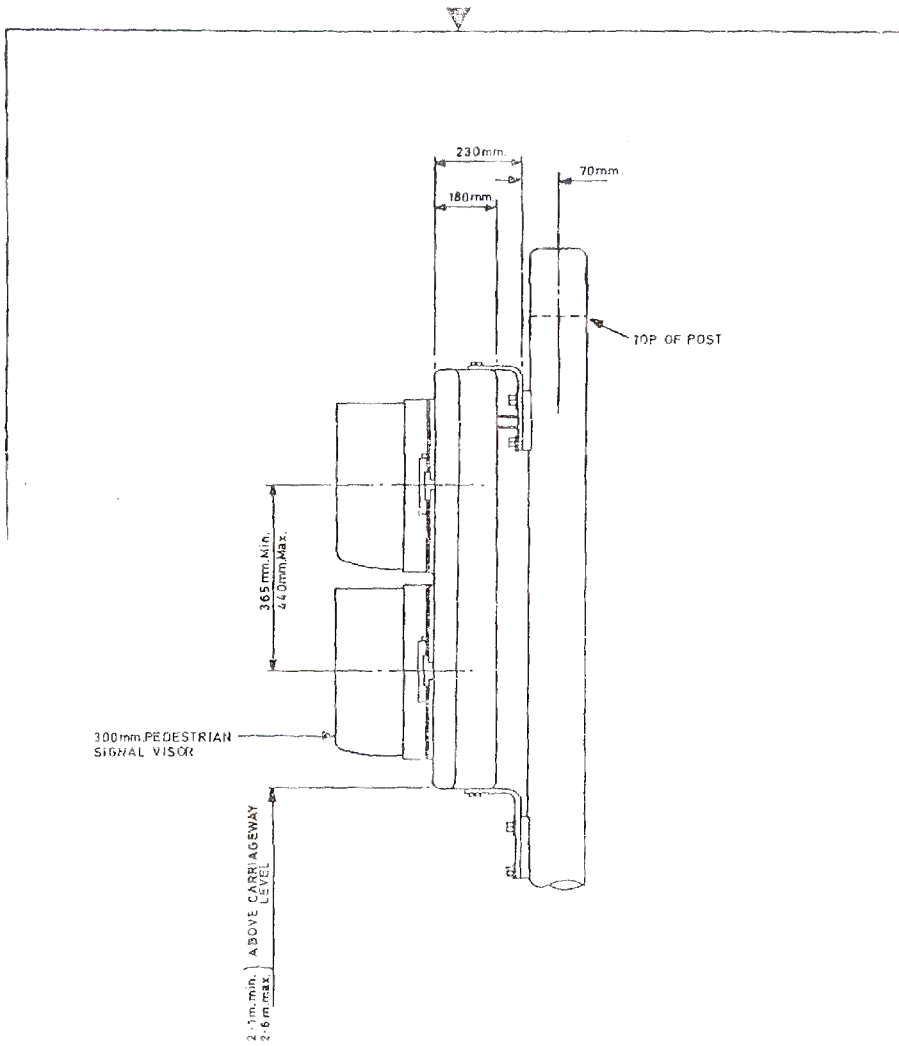
DIV: TRAFFIC CONTROL AND COMMS: DEPARTMENT OF TRANSPORT TOLLGATE HOUSE, HOULTON STREET, BRISTOL BS2 9DJ	Title TRAFFIC SIGNAL 200mm. GREEN & AMBER CYCLE SYMBOL	Drn <i>ka</i> Date 12.5.86	Drw No MCX 0396
		Appd <i>H. [signature]</i>	Issue A Sht No 1/1



TYPICAL TRAFFIC SIGNAL ASSEMBLY
 SHOWING 3 LIGHT SIGNAL HEAD,
 SOLAR SWITCH & BASEPLATE ATTACHMENT
 (WHERE SPECIFIED.)

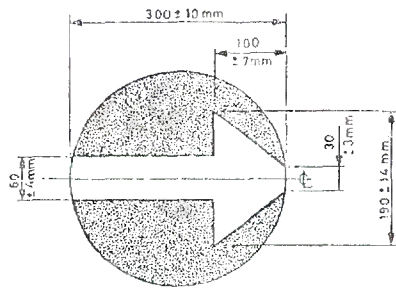
© CROWN COPYRIGHT 1975

DIV. TRAFFIC CONTROL AND COMMS: DEPARTMENT OF TRANSPORT TOLLGATE HOUSE, HOULTON STREET, BRISTOL BS2 9DJ	Title TRAFFIC SIGNAL 3 ASPECT HEAD TYPICAL ASSEMBLY	Drn <i>RA</i> Date 16.4.86. Chkd Appd <i>C.H. Kemp</i>	Dwg No MCX 0397 Issue A Sht No 1/1



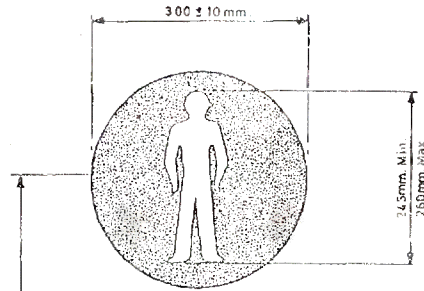
© CROWN COPYRIGHT 1986

IV TRAFFIC CONTROL AND COMMS:	Title TRAFFIC SIGNAL	Drn <i>RL</i>	Drg No
DEPARTMENT OF TRANSPORT	PEDESTRIAN HEAD	Date 18.4.86.	MCX 0398
FOLLGATE HOUSE,	TYPICAL ASSEMBLY	Chkd	Issue A
BOULION STREET, BRISTOL BS2 9DJ		Appd <i>H. L. [Signature]</i>	Shr No 1/1



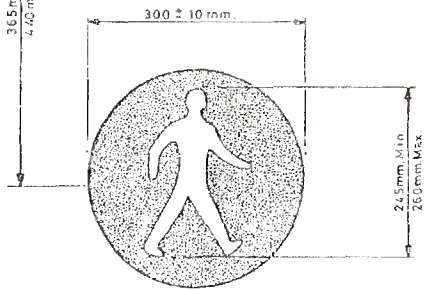
GREEN ARROW

Symbol is to be in accordance with Departmental drawing WM 3001.



STANDING MAN (RED)

Symbol is to be in accordance with Departmental drawing WM 4002

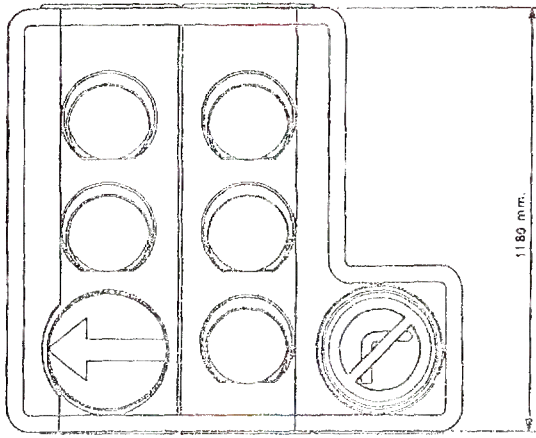
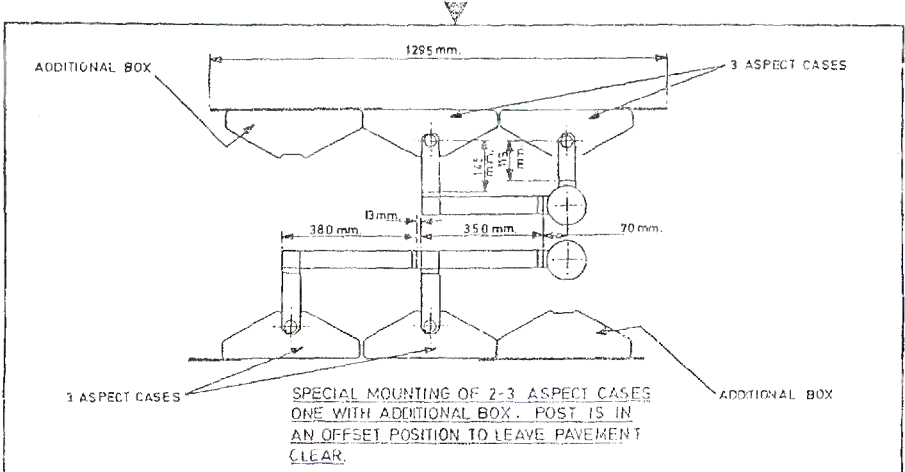


WALKING MAN (GREEN)

Symbol is to be in accordance with Departmental drawing WM 4002

© CROWN COPYRIGHT 1986

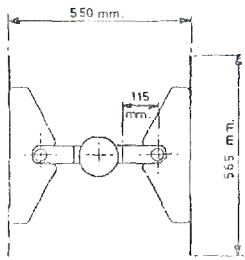
DIV TRAFFIC CONTROL AND COMMS. DEPARTMENT OF TRANSPORT TOLLGATE HOUSE, HOULTON STREET, BRISTOL BS2 9DJ	Title TRAFFIC SIGNAL LEGENDS FOR 300mm. GREEN ARROW & PEDESTRIAN LIGHT SIGNALS	Dwn <i>RA</i>	Org No
		Date 16. 6. 86.	MCX 0399
		Chkd	Issue A
		Appd. <i>M H-4</i>	Shp No 1/1



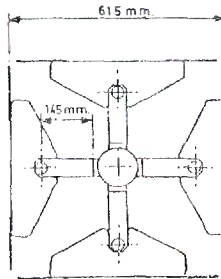
VIEW OF SIGNALS

© CROWN COPYRIGHT 1986

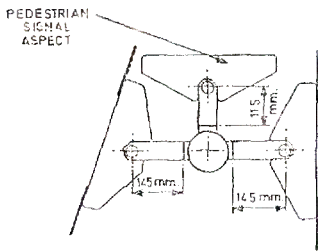
DIV. TRAFFIC CONTROL AND COMMS: DEPARTMENT OF TRANSPORT TOLLGATE HOUSE, HOULTON STREET, BRISTOL BS2 9DJ	Title	TRAFFIC SIGNAL	Drn	Ra	Drw No
		GENERAL MOUNTING	Date	22. 4. 86.	M CX 0400
		OF	Chkd		Issue A
		MULTIPLE SIGNALS	Appd	R. K. [unclear]	Unit No 1 / 3



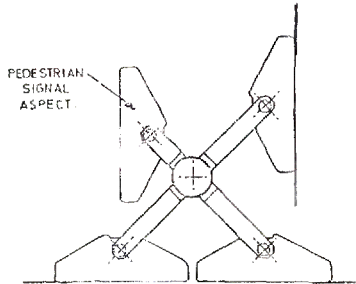
STANDARD BACK TO BACK MOUNTING



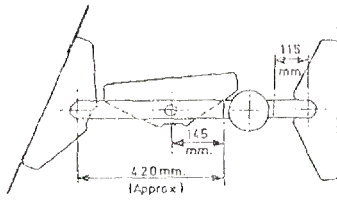
STANDARD 3 OR 4 ASPECT MOUNTING



STANDARD PEDESTRIAN ASPECT MOUNTING



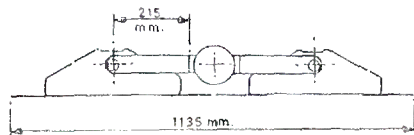
SPECIAL PEDESTRIAN ASPECT MOUNTING



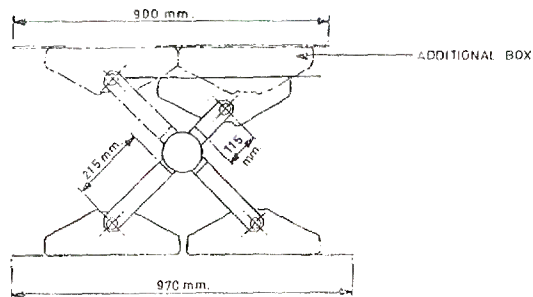
SPECIAL PEDESTRIAN ASPECT MOUNTING FOR NARROW FOOTPATHS

© CROWN COPYRIGHT 1986

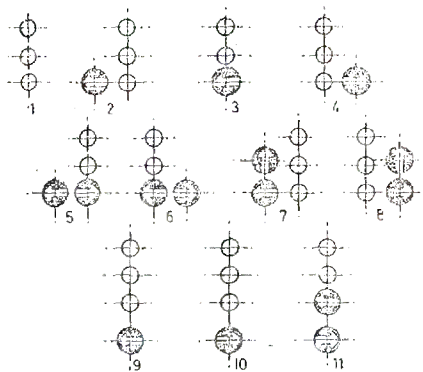
DIV TRAFFIC CONTROL AND COMMS: DEPARTMENT OF TRANSPORT TOLLGATE HOUSE, HOULTON STREET, BRISTOL BS2 9DJ	Title TRAFFIC SIGNAL GENERAL MOUNTING OF MULTIPLE SIGNALS	Drn <i>RA</i>	Drq No
		Date 22.4.86	MCX 0400
		Chkd	Issue A
		Appd <i>[Signature]</i>	Shr No 2/3



STANDARD SIDE BY SIDE MOUNTING



PERMITTED ARRANGEMENT OF SIGNALS



NOTE A

ADDITIONAL CASES FOR REGULATORY SIGNS MAY BE ADDED TO THESE SIGNAL ARRANGEMENTS.

1. 1 CASE ON EITHER OR BOTH SIDES OF THE LOWEST ASPECT IN FIG. 1 & 3
2. 1 CASE ON OPPOSITE SIDE OF MAIN SIGNAL TO ARROW IN FIG. 2, 4, 5, 6, 7 & 8.
3. 1 CASE ABOVE THE ARROW IN FIG. 2, 4, 5 & 6.
4. A SECOND 3 ASPECT SIGNAL MAY BE POSITIONED ALONGSIDE THE MAIN SIGNAL AS SHOWN ABOVE.
5. 1 CASE TO REPLACE GREEN ARROW IN LOWER POSITIONS ON 9, 10 & 11 IN EXCEPTIONAL CASES.

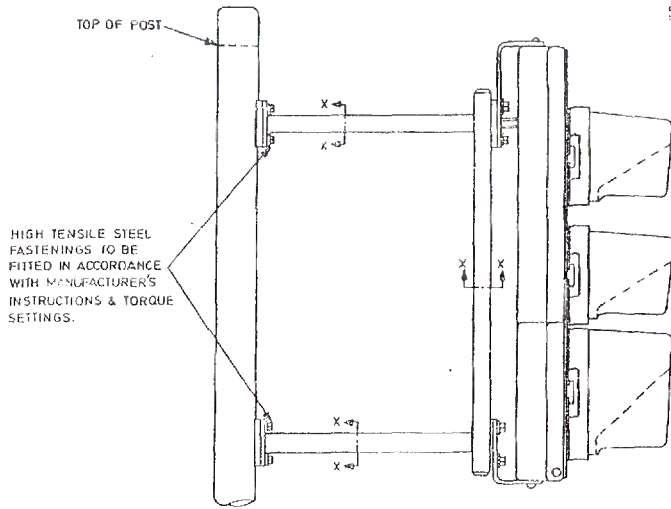
NOTE B

1. VARIATIONS IN ACCORDANCE WITH REGULATION 32 OF THE TRAFFIC SIGNS REGULATIONS & GENERAL DIRECTIONS 1981 ARE PERMITTED.
2. IT IS PERMITTED TO HAVE A REGULATORY AHEAD ARROW SIGN UNDER A GREEN AHEAD ARROW SIGNAL.

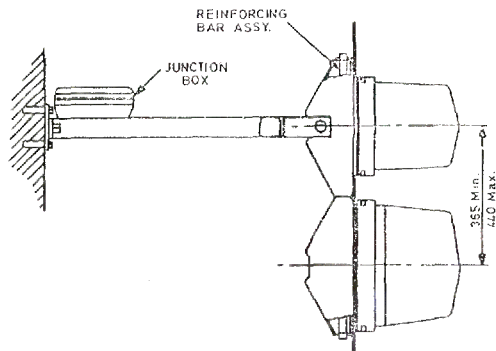
© CRGWH COPYRIGHT 1986

DIV TRAFFIC CONTROL AND COMMS: DEPARTMENT OF TRANSPORT TOLLGATE HOUSE, HOULTON STREET, BRISTOL BS2 9DJ	Title TRAFFIC SIGNAL	Drn <i>RL</i>	Drp No
	GENERAL MOUNTING	Date 23.4.86	MCX C400
	OF	Chkd	Issue A
	MULTIPLE SIGNALS	Appd <i>P.L.T.</i>	Sht No 3/3

DETAIL SHOWING
SECTION 'X-X' THRO
BRACKET



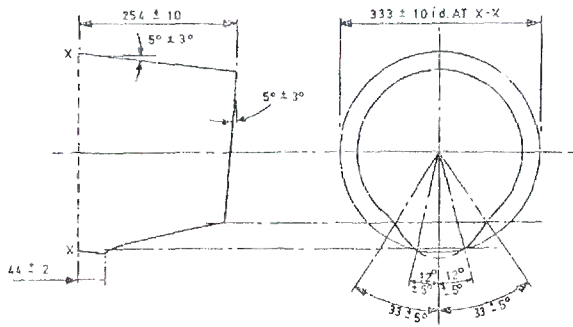
POST MOUNTED EXTENSION BRACKET



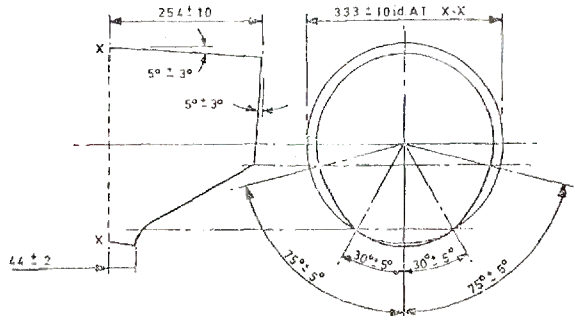
WALL MOUNTED EXTENSION BRACKET
(PLAIN VIEW)

© CROWN COPYRIGHT 1986

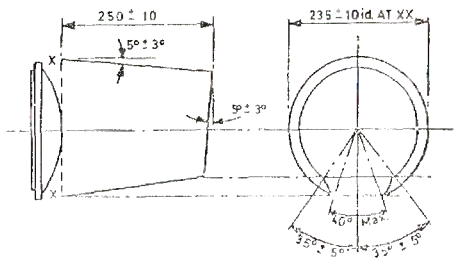
DIV. TRAFFIC CONTROL AND COMMS: DEPARTMENT OF TRANSPORT TOLLGATE HOUSE, HOULTON STREET, BRISTOL BS2 9DJ	Title TRAFFIC SIGNAL EXTENSION BRACKET	Dwn <i>RL</i>	Drg No.
		Date 18.4.86.	MCX 0401
		Chkd	Issue A
		Appd <i>E.H.</i>	Sh1 No. 1/1



300mm. SECONDARY SIGNAL VISOR



300 mm PRIMARY SIGNAL VISOR

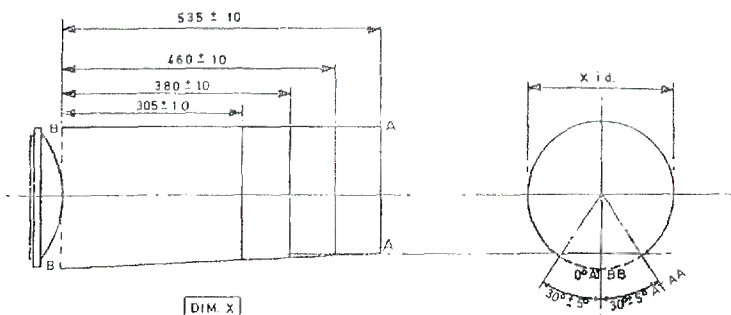


200mm. SECONDARY SIGNAL VISOR

NOTE.
ALL LINES DIMENSIONED
IN MILLIMETRES

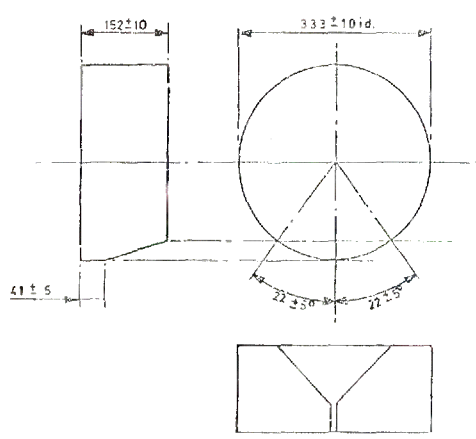
© CROWN COPYRIGHT 1985

DIV TRAFFIC CONTROL AND COMMS: DEPARTMENT OF TRANSPORT TOLLGATE HOUSE, HOULTON STREET, BRISTOL BS2 9DJ	Title TRAFFIC SIGNAL VISORS	Dwn <i>Re</i>	Dwg No MCX 0402
		Date 1.5.86.	Issue A
		Chkd	Sht No 1/2
		Appd <i>(Signature)</i>	



	DIM. X
200mm SIGNAL	235 ± 10
300mm SIGNAL	333 ± 10

LONG VISORS



NOTE
ALL LINES DIMENSIONED
IN MILLIMETRES

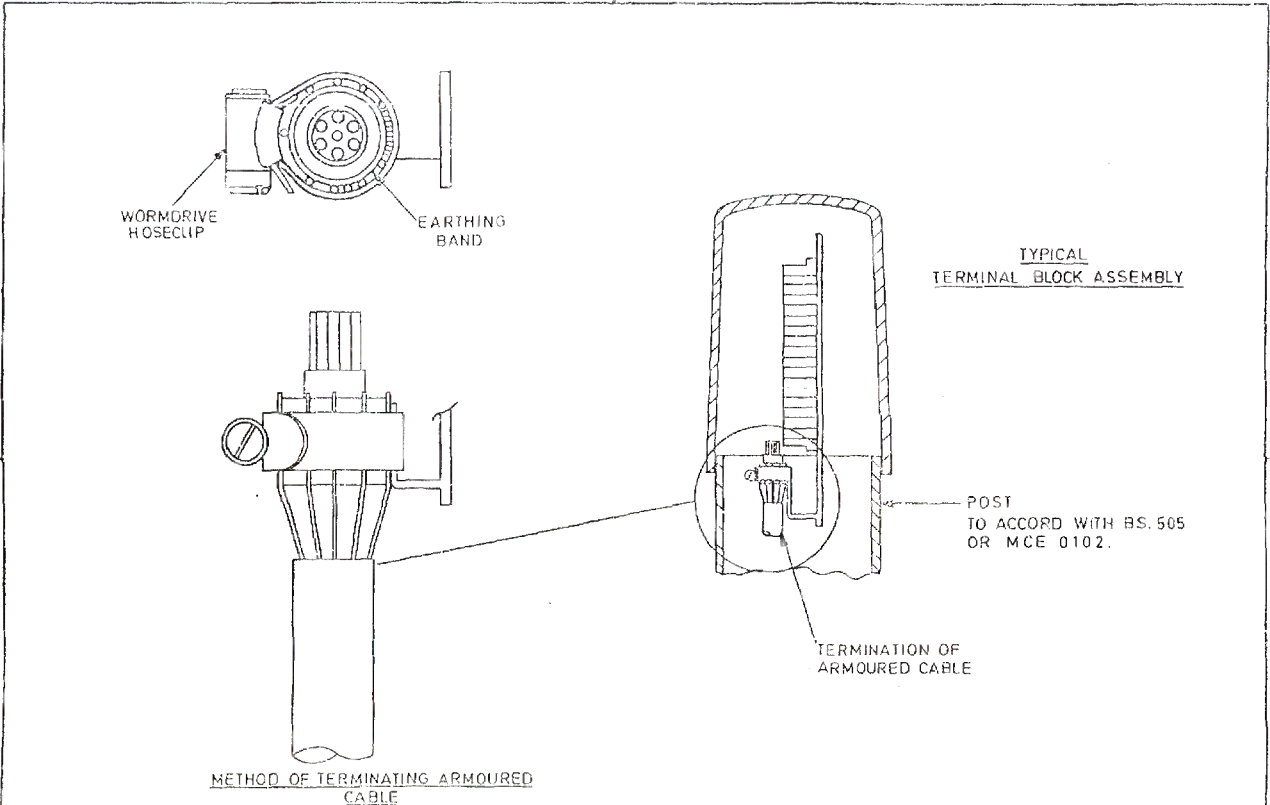
300mm PEDESTRIAN SIGNAL VISOR

© CROWN COPYRIGHT 1986

DIV. TRAFFIC CONTROL AND COMMS:
DEPARTMENT OF TRANSPORT
TOLLGATE HOUSE,
HOULTON STREET, BRISTOL BS2 9DJ

Title
TRAFFIC SIGNAL
VISORS

Drn <i>Rh.</i>	Drg No.
Date 1.5.86.	MCX 0402
Chkd	Issue A
Appd C.H.K. 1/1	Shit No 2 / 2



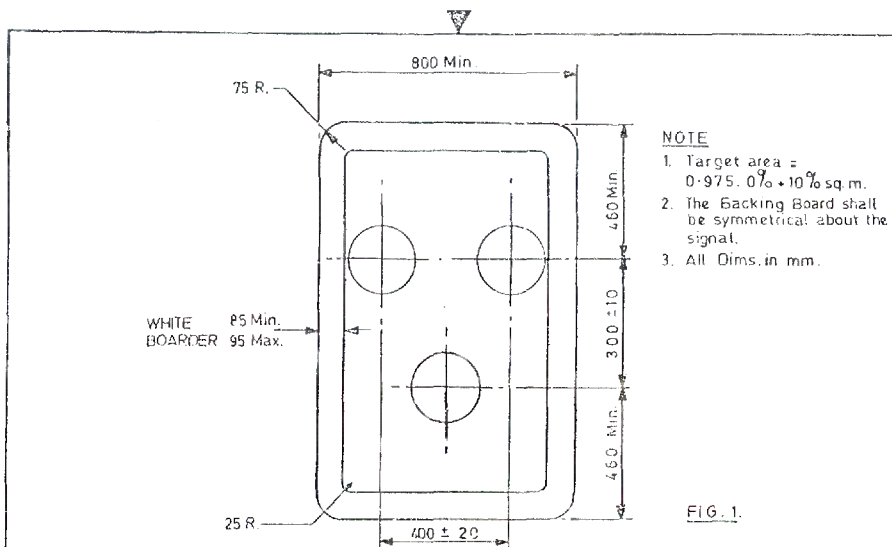
DIV: TRAFFIC CONTROL AND COMMS:
 DEPARTMENT OF TRANSPORT
 TOLLGATE HOUSE,
 HOULTON STREET, BRISTOL BS2 9DJ

Title
 TRAFFIC SIGNAL POST CAP
 CABLE TERMINATION ASSEMBLY

© CROWN COPYRIGHT 1986

Drn. <i>RA</i>	Drg. No.
Date 16. 6. 86	MCX 0403
Chkd.	Issue A
Appd. <i>C.H. Ho</i>	Shr. No. 1/1

182319/8. 6/78. 164/7. E.T. 7-80.



NOTE
 1. Target area = 0.975.0% + 10% sq. m.
 2. The Backing Board shall be symmetrical about the signal.
 3. All Dims. in mm.

FIG. 1.

WIG-WAG SIGNALS FOR INSTALLATION ON NARROW CENTRAL RESERVES.

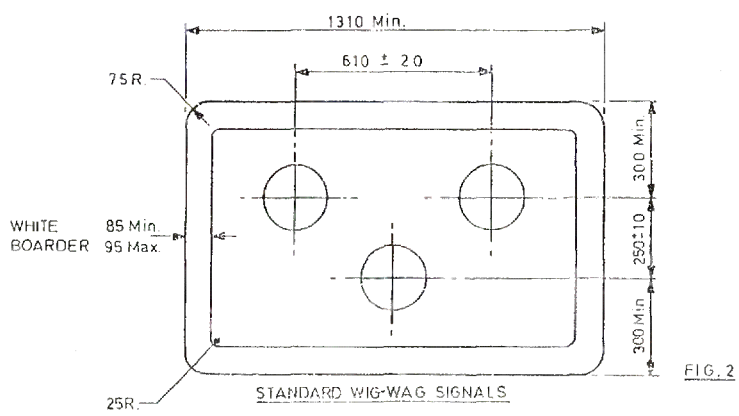


FIG. 2

STANDARD WIG-WAG SIGNALS

NOTE
 1. Dimensions of Wig-Wag signal shown in BS 505, 1971.
 2. Target area = 1.54 sq. m.
 3. The Backing Board shall be symmetrical about the signal.

© CROWN COPYRIGHT 1986

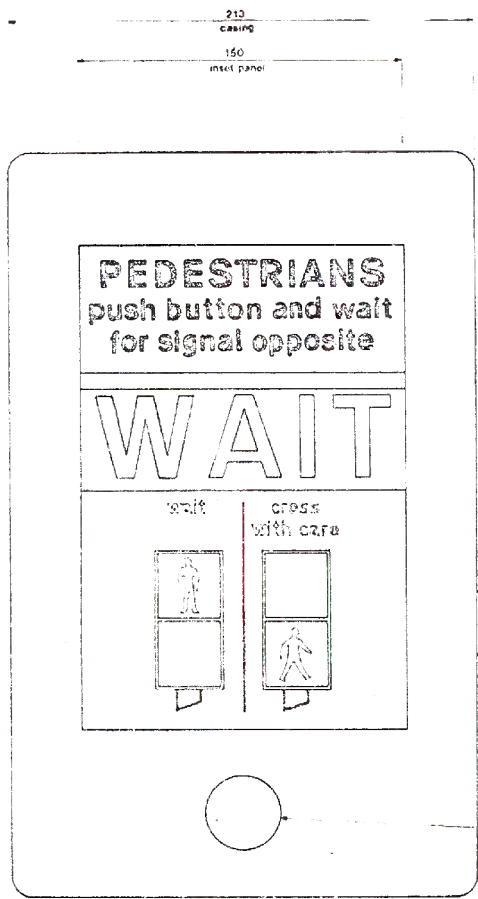
DIV. TRAFFIC CONTROL AND COMMS: DEPARTMENT OF TRANSPORT TOLLGATE HOUSE, HOULTON STREET, BRISTOL BS2 9DJ	Title	TRAFFIC SIGNAL	Drn	Ra.	Drw No
		WIG WAG	Date	1.5.86.	MCX 0404
		GENERAL ARRANGEMENT	Chkd		Issue A
			Appd	H. J. Lewis	Sht. No 1/1

NOTE
 ALL LETTERING IS TO BE IN THE STYLE OF 'TRANSPORT HEAVY' OR 'TRANSPORT MEDIUM' AS INDICATED, 10 X HEIGHTS GIVEN AND SPACED TO FIT AREAS AVAILABLE, AS SHOWN ON DRAWING.
 THIS WILL NOT NECESSARILY BE IN ACCORDANCE WITH TILE SPACING VERTICALLY OR HORIZONTALLY THAT MIGHT BE GIVEN IN THE TRAFFIC SIGNS REGULATIONS AND DIRECTIONS 1981

DIV. TRAFFIC CONTROL AND COMMUNICATIONS
 DEPARTMENT OF TRANSPORT
 TOLLAGE HOUSE,
 MOULTON STREET, BRISTOL BS2 0DJ

TRAFFIC CONTROL PANEL FOR
 PEDESTRIAN CONTROL PANEL FOR
 TRAFFIC SIGNALS

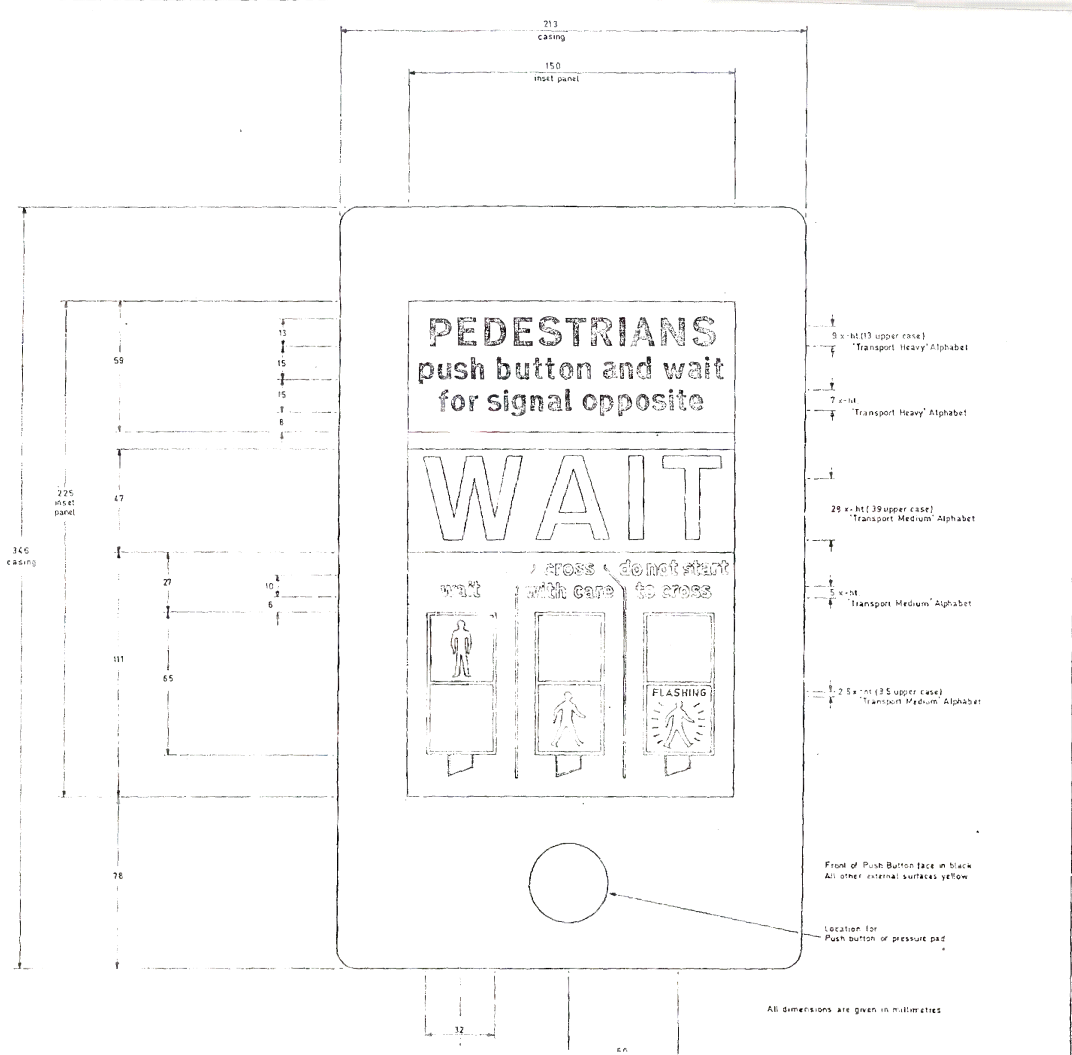
ORIGINAL DRG. DATE: 5/84 J. BAI	ISSUE	DATE	BY
ALL DIMENSIONS ARE IN MM	A	1/85	J. BAI
TOLERANCE UNLESS OTHERWISE STATED	B	1/85	J. BAI
THIRD ANGLE PROJECTION DO NOT SCALE	C	1/85	J. BAI
	D	1/85	J. BAI
	E	1/85	J. BAI
	F	1/85	J. BAI
	G	1/85	J. BAI
	H	1/85	J. BAI
	I	1/85	J. BAI
	J	1/85	J. BAI
	K	1/85	J. BAI
	L	1/85	J. BAI
	M	1/85	J. BAI
	N	1/85	J. BAI
	O	1/85	J. BAI
	P	1/85	J. BAI
	Q	1/85	J. BAI
	R	1/85	J. BAI
	S	1/85	J. BAI
	T	1/85	J. BAI
	U	1/85	J. BAI
	V	1/85	J. BAI
	W	1/85	J. BAI
	X	1/85	J. BAI
	Y	1/85	J. BAI
	Z	1/85	J. BAI



- 1 x-hl (13 upper case) Transport Heavy Alphabet Black characters on white background
- 7 x-hl Transport Heavy Alphabet
- 28 x-hl (39 upper case) Transport Medium Alphabet White characters on blue background when illuminated
- 1 x-hl Transport Medium Alphabet White characters & lines on black background
- Red standing man B.S. 381c No. 537
- Green walking man B.S. 381c No. 225
- Front of Push Button face in black. All other external surfaces yellow. B.S. 381c No. 355
- Location for Push Button or pressure pad

All dimensions are given in millimetres

NOTE
 ALL LETTERING IS TO BE IN THE "HEAVY" OR "TRANSPORT MEDIUM" AS GIVEN AND SPACED TO FIT AREAS ON DRAWING.
 THIS WILL NOT NECESSARILY BE IN THE SPACING VERTICALLY OR HORIZONTALLY BE GIVEN IN THE TRAFFIC SIGNS R.D. DIRECTIONS 1931.



9 x 141 (13 upper case)
 "Transport Heavy" Alphabet

29 x 141 (39 upper case)
 "Transport Medium" Alphabet

5 x 141
 "Transport Medium" Alphabet

2.5 x 141 (3.5 upper case)
 "Transport Medium" Alphabet

Front of Push Button face in black
 All other external surfaces yellow

Location for
 Push button or pressure pad

All dimensions are given in millimetres

PAGE